



# Information about the new Club storage room and Caddy Master Office

## Precedents:

Our actual facilities for club storage and Caddy Master could clearly be improved:

When the Club House was built 40 years ago the actual situation with the number of members was not taken into consideration.

## Actual situation

Currently we have almost 2.000 members and out of this figure only 94 members have their club stored, and another 95 members have Golf Bag and electric trolley, we have a **large waiting list for members wishing to store their bag or their electric trolleys.**

The existing Club storage room has only 135 square meters and the distribution makes this area very inefficient



**Access to the Caddy master**



**Caddy master Office**



**General view of the Club Storage Room**

## Innitial project

Some months ago we studied the possibility of extending the actual Club storage room, together with the construction of the new Caddy Master Office in the upper terrace where members normally place their buggies, incorporating the future pro– shop into the project.

This initiative was rejected due to some inconveniences.

1. The total area for the future club storage room was less than 250 square meters , and probably this could have coped with the requirements for Club storage for the existing members and some of the waiting list , but it wold have been totally **insufficient for future demands.**
2. The construction of this project would have represented that the existing Club storage, Caddy Master and Pros-shop would have been inoperative during the construction, consequently this would have affected the normal life of the Club and created a lot of inconveniences to members.
3. **The upper terrace where Members park their buggies would require reinforcement , due to the fact that currently we cannot build another floor on top**
4. **The location of the Caddy master and Pro-Shop** , even in the event of being close to the Club house, was too far from the existing first tee fo the North Course, and we intend to have the Caddy master closer to the first tee in order to control the access to the course.
5. An old building in connection to a new contraction will add extra difficulties , as it is well know that old construction and new contraction does not get along very well

## **Actual Project**

After analyzing the different alternatives, and the current and future needs for the Club , we decided that the best possible location was nearer to the first tee NORTH COURSE, next to the Putting Green in the area where we have the existing starter's shed.

We asked two architects to produce alternative projects including the following main aspects.

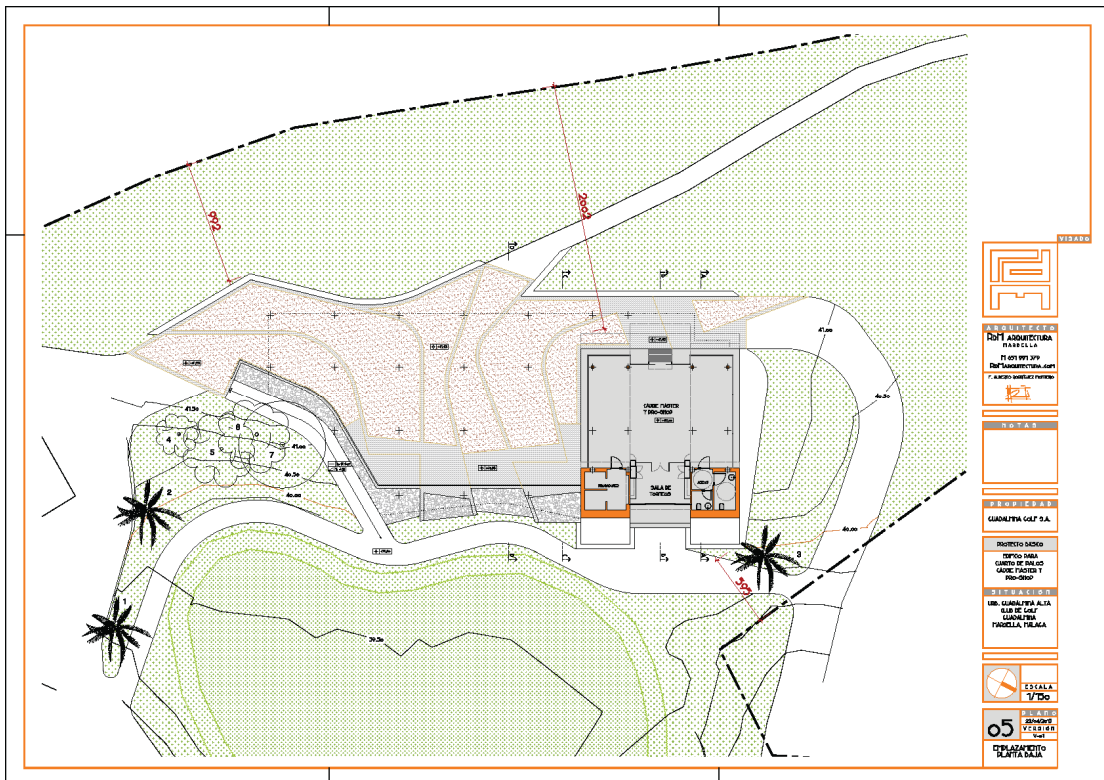
1. To build around 500 square meters of Club storage , sufficient for the existing demand and covering the future needs.
2. A new Caddy master modern, incorporating the Pro-shop and the Tournaments Office.
3. Nearer to the first tee NORTH COURSE to implement the control of access to the Course.
4. Integrated in the actual architectural aspect of the existing Club House:
5. At and adequate cost considering the financial situation fo the Company.



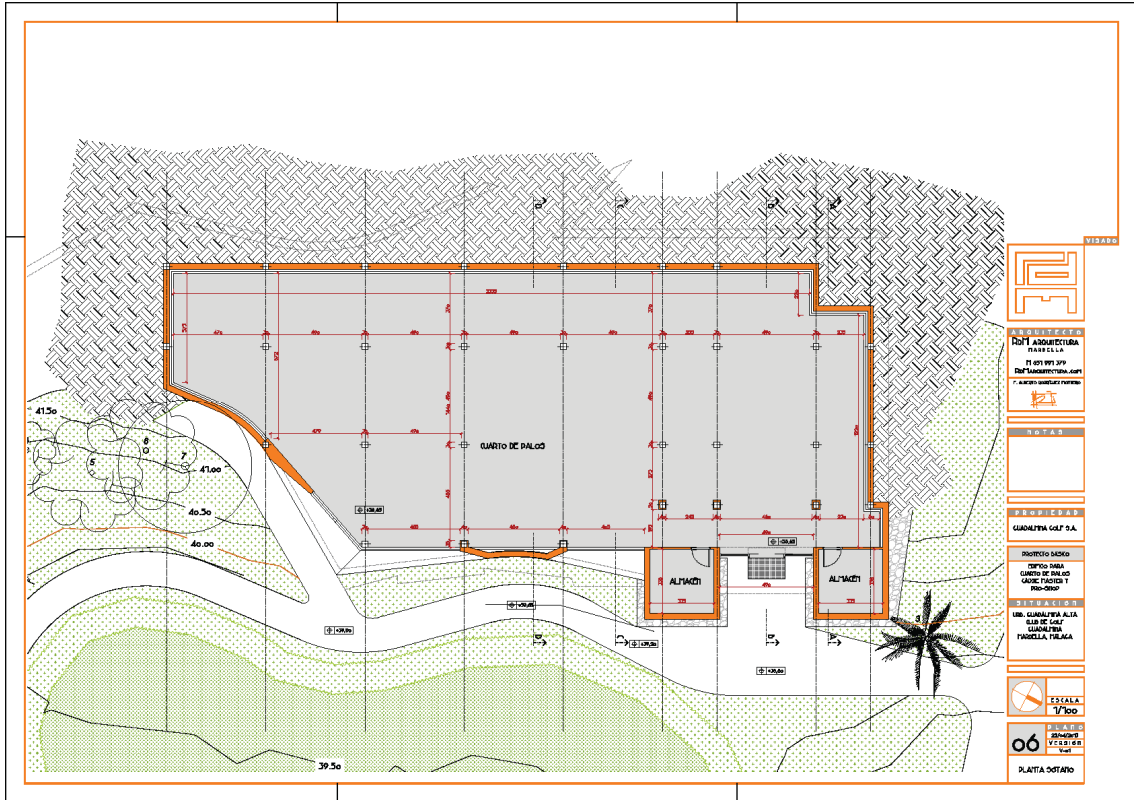
**View of the New Caddy master**



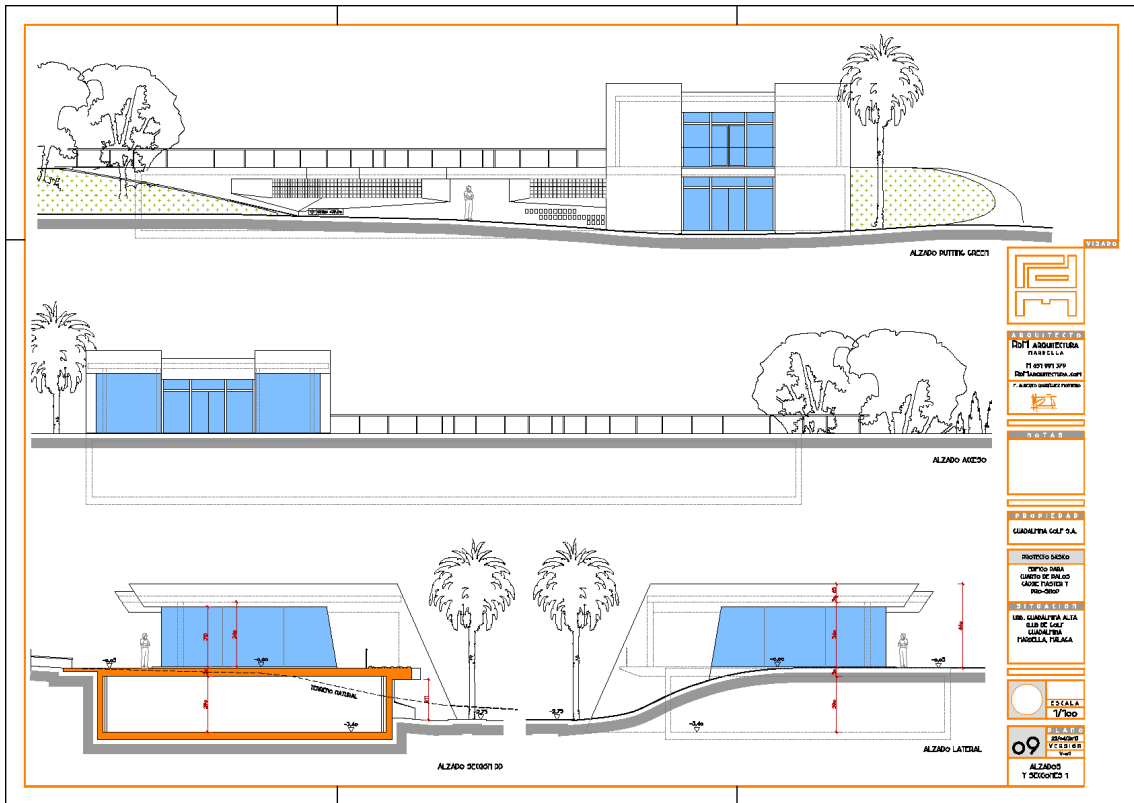
View of the Club storage room and Caddy master Office from the Putting Green



Drawing of the new Caddy master , Pro-Shop and Tournaments Office



Drawing of the Club storage



Elevated views and Sections

CADDY MASTER Y CUARTO DE PALOS CLUB GOLF GUADALMINA		HEZASA CONSTRUCCIONES S.L.												FECHA													
ANEXOS VII Y VIII, PLAN DE TRABAJOS Y CERTIFICACIONES		2013																									
ACTIVIDAD	PRESUPUESTO	JULIO				AGOSTO				SEPTIEMBRE				OCTUBRE				NOVIEMBRE				DICIEMBRE					
		1ª	2ª	3ª	4ª	1ª	2ª	3ª	4ª	1ª	2ª	3ª	4ª	1ª	2ª	3ª	4ª	1ª	2ª	3ª	4ª	1ª	2ª	3ª	4ª		
		1-7	8-14	15-21	22-28	29-4	5-11	12-18	19-25	26-1	2-8	9-15	16-22	23-29	30-6	7-13	14-20	21-27	28-3	4-10	11-17	18-24	25-1	2-8	9-15	16-22	23-29
MOVIMIENTO DE TIERRAS																											
CIMENTACIÓN																											
SANEAMIENTO																											
ESTRUCTURA																											
ALBAÑILERÍA																											
CUBIERTAS E IMPERMEABILIZACIONES																											
REVESTIMIENTOS																											
SOLADOS Y ALICATADOS																											
CARPINTERÍA DE MADERA																											
CARPINTERÍA METÁLICA - CERRAJERÍA																											
INSTALACIÓN DE ELECTRICIDAD																											
INSTALACIÓN DE FONTANERÍA DESAGÜES																											
APARATOS SANITARIOS Y ORFEBERÍA																											
INSTALACIONES DE CLIMATIZACIÓN																											
PROTECCIÓN CONTRA INCENDIOS																											
INSTALACIÓN DE TELECOMUNICACIONES																											
VIDRIOS																											
PINTURAS																											
SEGURIDAD Y SALUD																											
PLAN DE CONTROL DE CALIDAD																											
URBANIZACIÓN																											
TOTAL PRESUPUESTO																											

Time schedule for construction July to December 2013

### Immediate actions

In the next days we will start the construction of the new access to the first tee NORTH COURSE , and Driving Range facilities.

Once the new path is completed, it will be opened to access onto the first tee, and the area for the construction of the new project, will be closed following the indications of the Health and Safety program of the Constructor. The starter's shed will be moved to the first tee

We expect to start the construction at the beginning of July, we will keep you informed about the progress in the construction.



## How it will affect ot Member of Real Club de Golf Guadalmina ?

1. After the Club Storage room is finished, we will inform Members that they will have one year , **until January 2015**, to find an alternative place to store their Electric Trolleys, during 2014 Member with an electric trolley stored will be able to maintain their storage.
2. Members with their clubs stored will be offered to have a locker with capacity for two bags, locked with their own key, depending the number of bags lockers will be considered individual or family.
3. We will inform Members of the waiting list that they have now the possibility to store their golf bags
4. In the future we will be adding more lockers under demand , a minimum number will be required in order to maintain the prices as lower as possible.
5. Guadalmina Golf s.a. will purchase a fleet of electric trolleys which will be offered to Members on an annual basis or on a daily basis, by doing this members could have an electric trolley without having to buy one or pay the cost of maintenance of their own.
6. To facilitate the work of the staff, responsible for the Club Storage Room and for security reasons, it is not allowed to store other objects in the lockers other than Golf bags, which includes folding carts, shoes, rain clothes ... etc.

We feel sure that after the works we will be in the position to offer Members a much better service.

We regret the inconveniences that this works may cause,